

# FYI: Stained Glass Gallery

*Photographic Presentations of New Work and Recent Restoration*



“FYI: Stained Glass Gallery” features new work and recently completed restorations. Work presented is selected from among the submissions received to highlight what is happening right now in the world of architectural, stained, and decorative art glass. This section of *The Stained Glass Quarterly* is open to everyone creating stained and architectural art glass for religious, corporate, public, or private buildings.

*For more information on “FYI: Stained Glass Gallery” and to view Galleries from past issues, visit [www.stainedglass.org](http://www.stainedglass.org).*

# Down East Stained Glass

*New Bern, North Carolina*

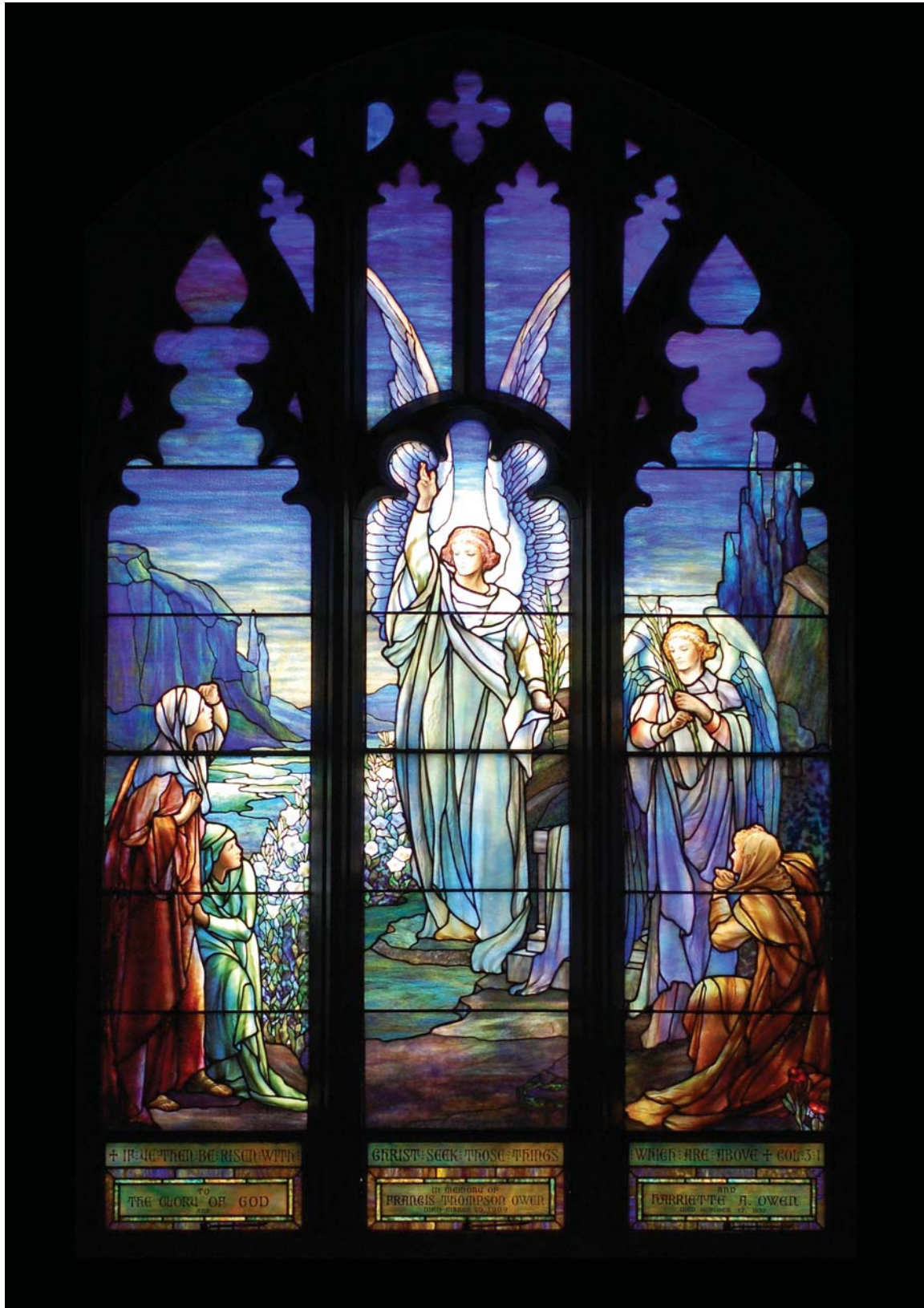


Bathroom Renovation  
*Peacock Window 57" x 50"*

Inspired by an original stained glass panel by Tiffany Studios, this panel is a backdrop to a modern fiberglass pedestal bathtub with working Jacuzzi. <http://downeaststainedglass.com/>

# Stained Glass Resources, Inc.

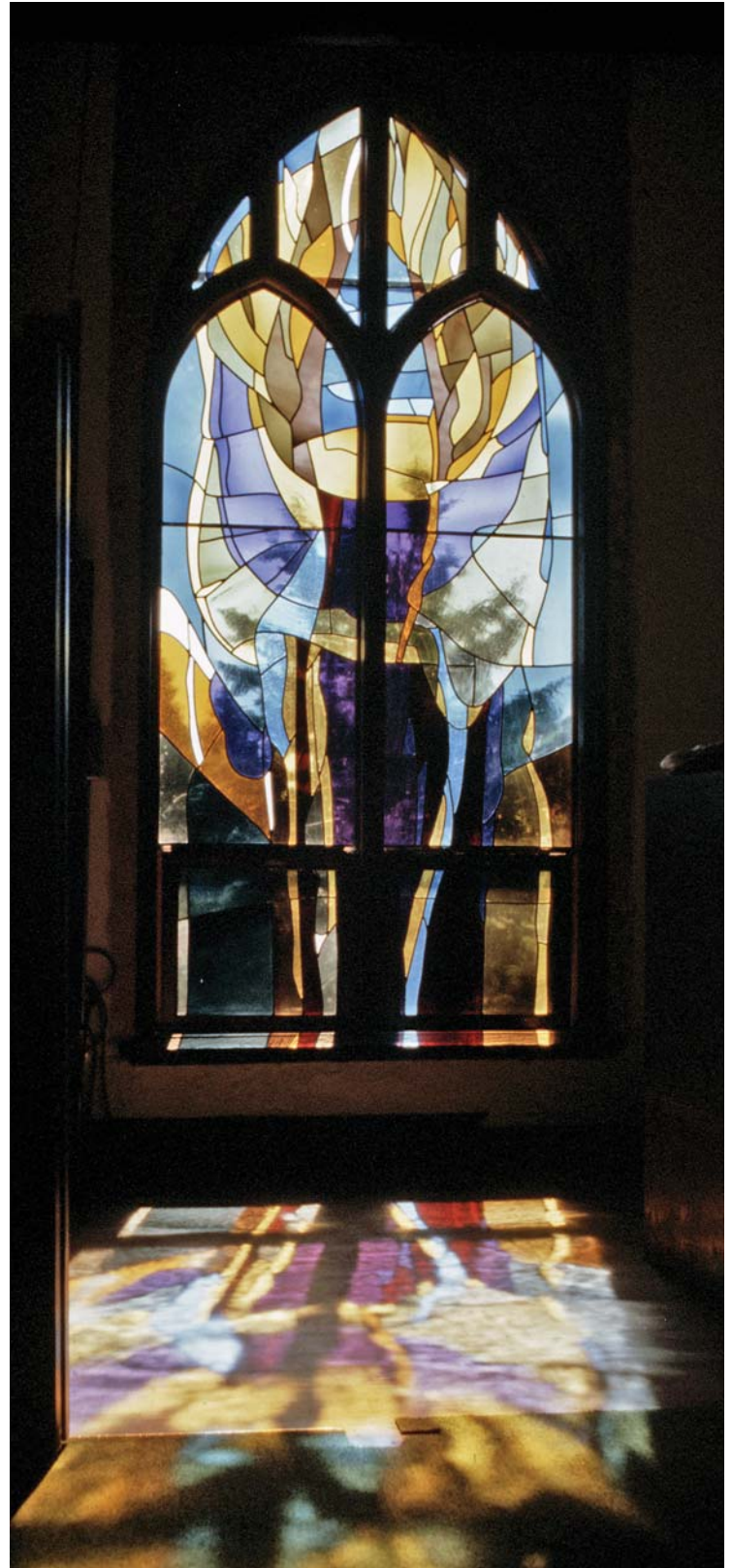
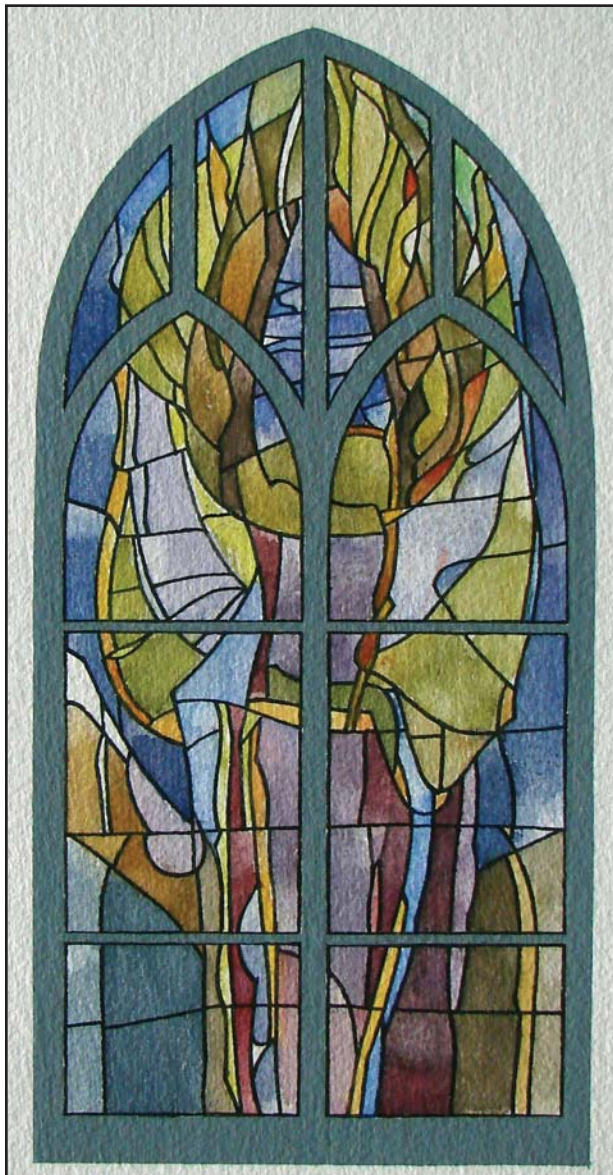
Hampden, Massachusetts



*The Ascension* by Tiffany Studios is an installation at Christ Church Episcopal and Trinity Lutheran Church in Sheffield, MA. The deteriorated condition of the lead came allowed the glass to migrate downward, causing gaps of daylight in the upper sections and buckling and broken glass in the lower sections. The window was restored by complete releading in 2009 by Stained Glass Resources, Inc. of Hampden, MA. [www.stainedglassresources.com](http://www.stainedglassresources.com)

# Dieterich Spahn Studios

*Minnetonka, Minnesota*



Annunciation Catholic Church, Mayhew Lake, MN

Dieterich Spahn's work is connected directly to the contemporary German stained glass movement, which is closely related to examples seen in the painting movement of the Bauhaus school, and Expressionism. Spahn has created hundreds of windows for worship spaces and other architectural settings across the United States. [www.dieterichspahn.com](http://www.dieterichspahn.com).

# State of the Art, Inc.

*Knoxville, Tennessee*



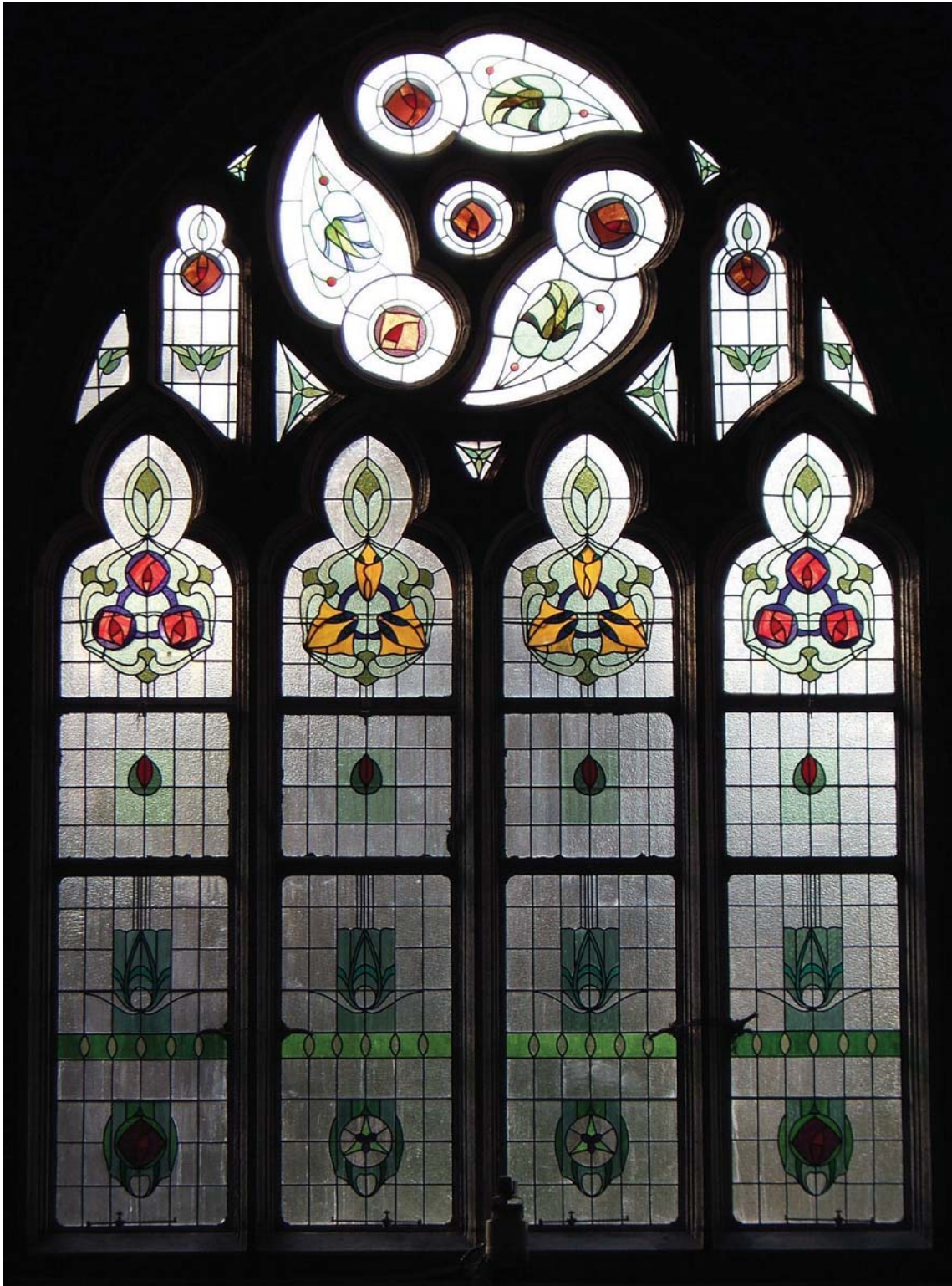
Cooke Mortuary

Maynardville, Tennessee

State of the Art, Inc., Stained Glass Studio specializes in new work as well as in repair and restoration. As an Accredited Member of the Stained Glass Association of America, State of the Art prides themselves on professionalism and their ability to create high-quality stained glass in a site-specific design. From the drawing board to the completed installation, the entire team at State of the Art takes great pride in their work and makes customer satisfaction their number-one goal. [www.sotaglass.com](http://www.sotaglass.com).

# Eztu Glass Art

Jakarta, Indonesia



St. Andrews, Hong Kong

Founded in 1981, Eztu Glass Art is a progressive and successful company with a distinct style and many installations not only in Indonesia but across Asia and around the world. [www.eztuglass.com](http://www.eztuglass.com).